

Forum für Universität und Gesellschaft  
Klimawandel und Ernährungssicherheit  
UniS A003, 27.11.2010

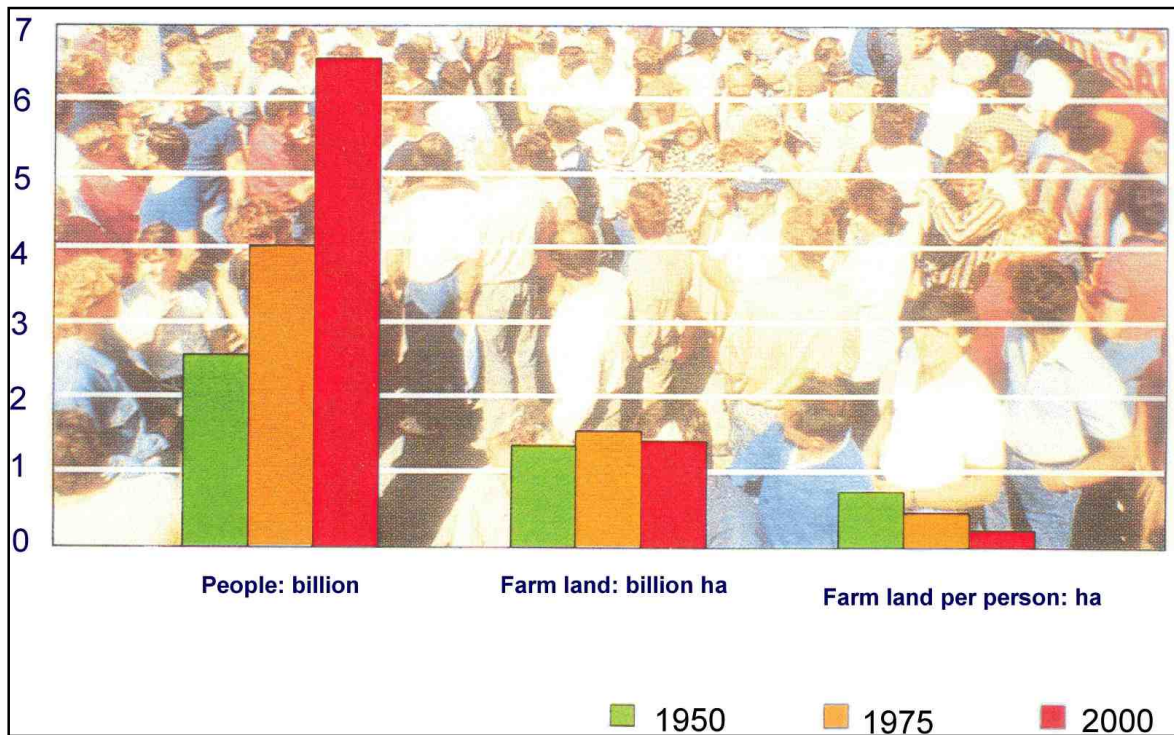
## Land und Nahrung

### Welche Landwirtschaft wird 10 Milliarden Menschen ernähren können?

Hans Hurni  
Nationaler Forschungsschwerpunkt NCCR North-South  
Universität Bern



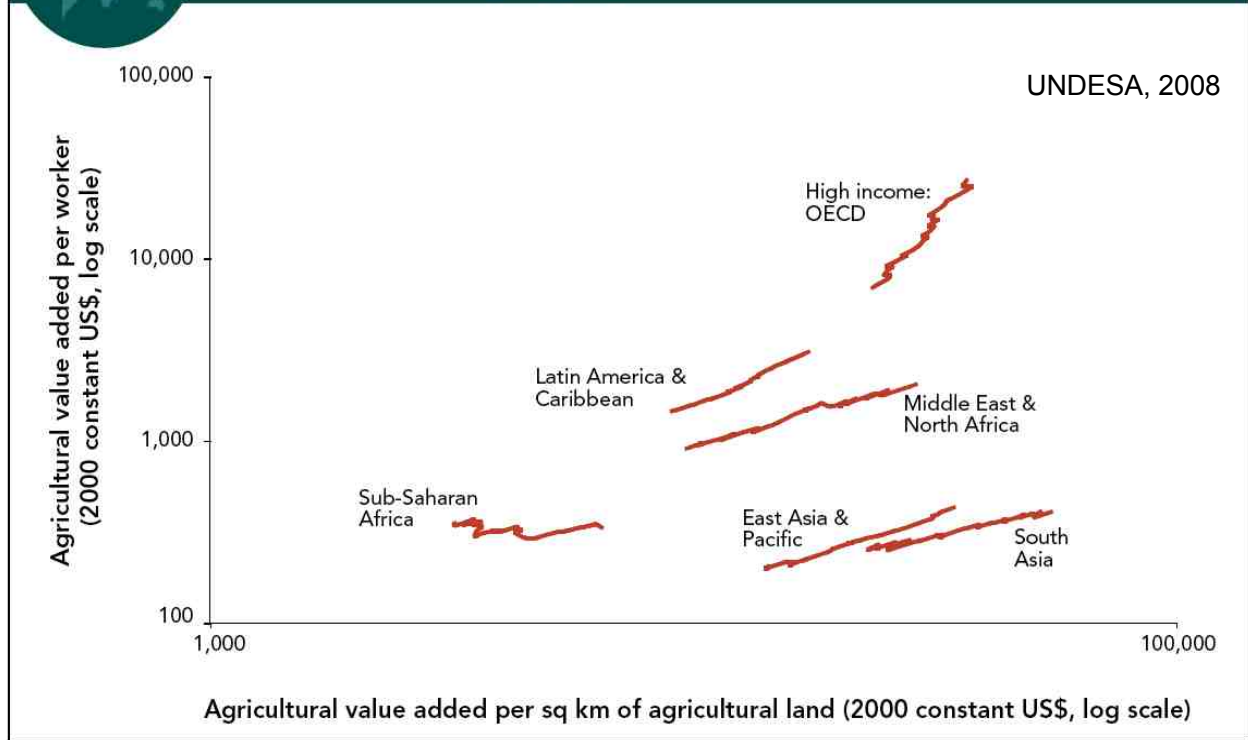
Urs Wiesmann, 1996



**Bevölkerung und Ackerland, 1950 - 2000**

Quelle unbekannt

## Growth in land and labour productivity, by region, 1971-2003



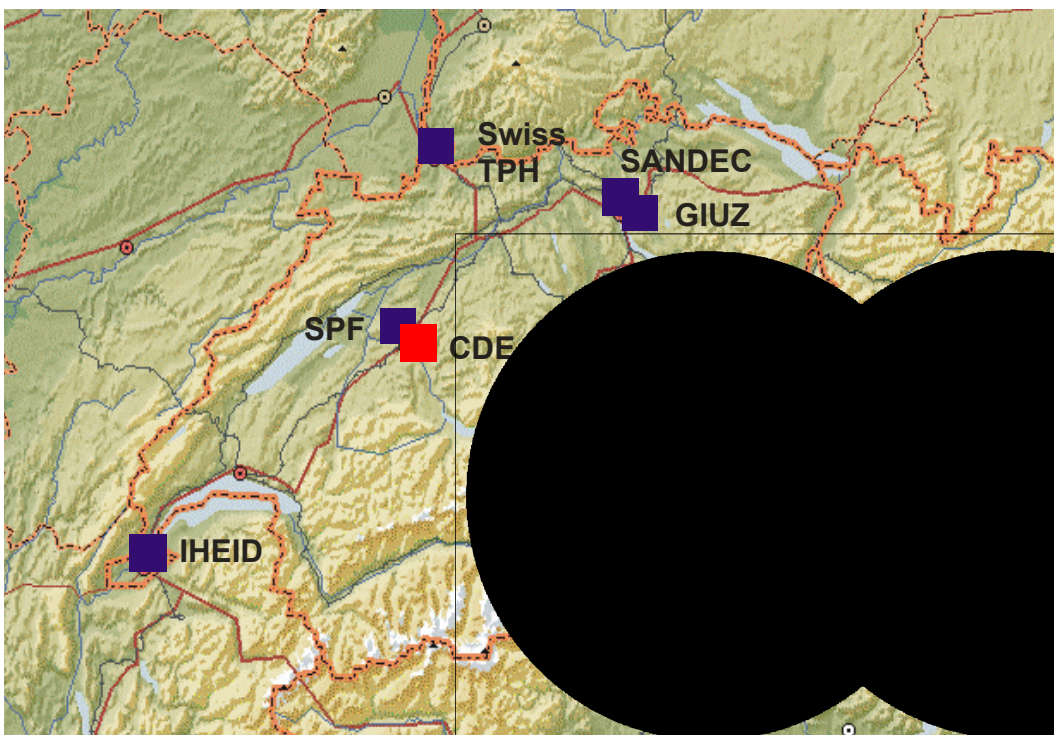
Source: Based on data from the World Bank's World Development Indicators online database.

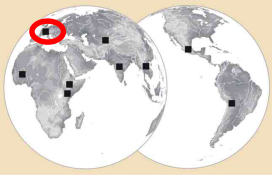
## Nationaler Forschungsschwerpunkt Nord-Süd (NCCR North-South)

[www.north-south.unibe.ch](http://www.north-south.unibe.ch)

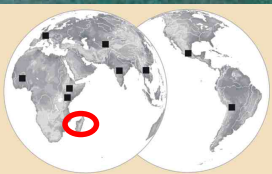
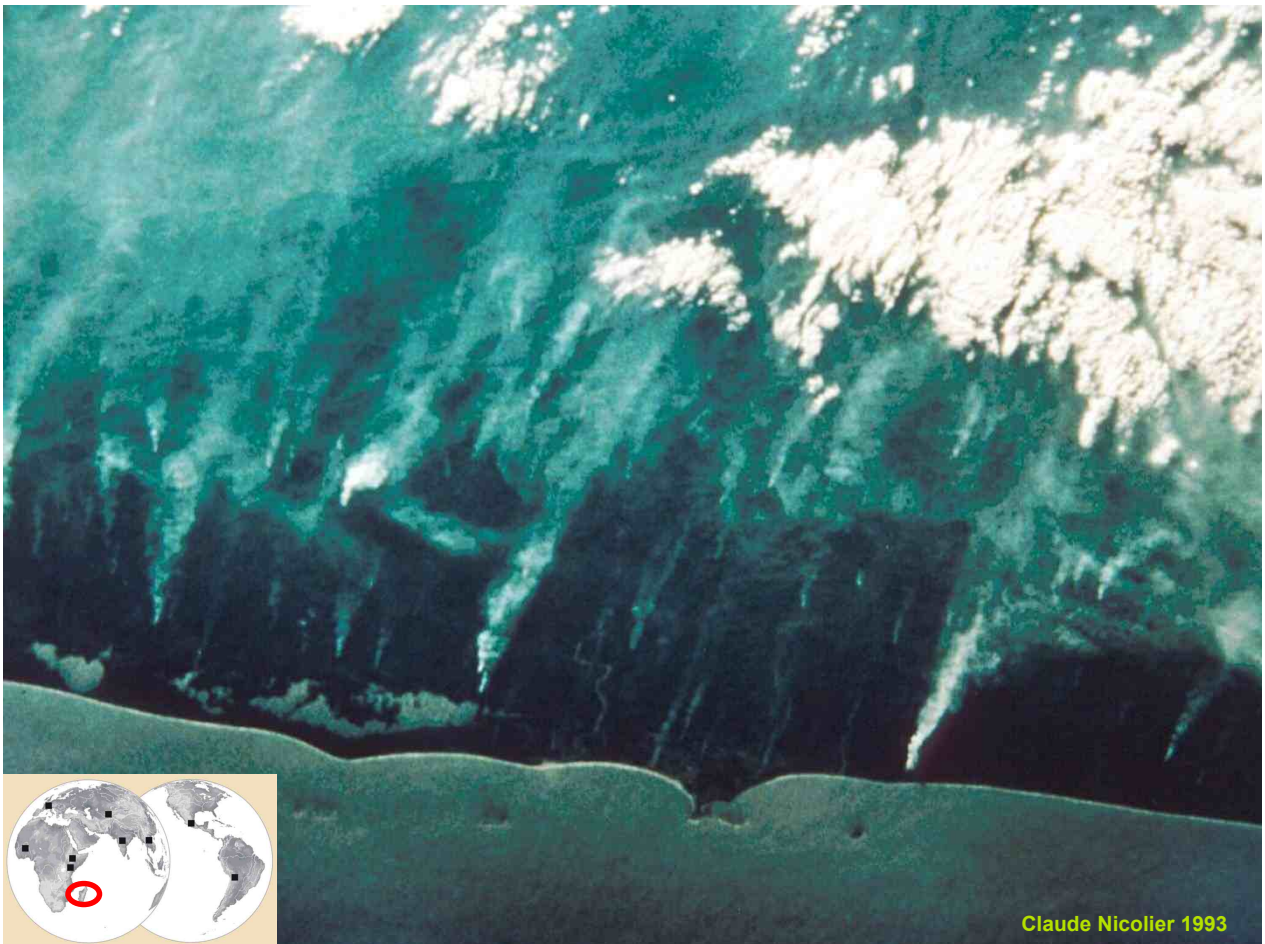
**u<sup>b</sup>**

UNIVERSITÄT  
BERN

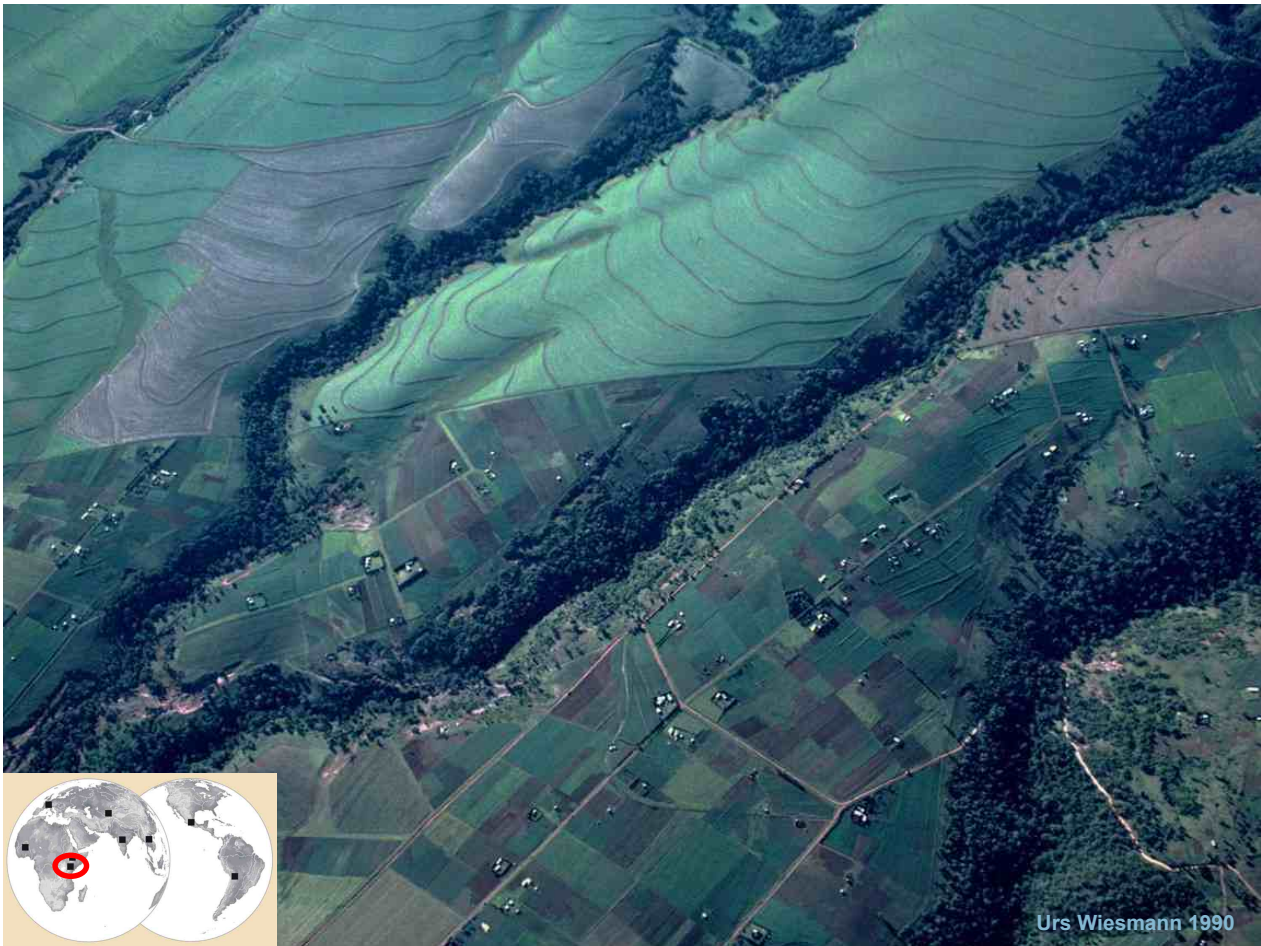




Urs Wiesmann 2006



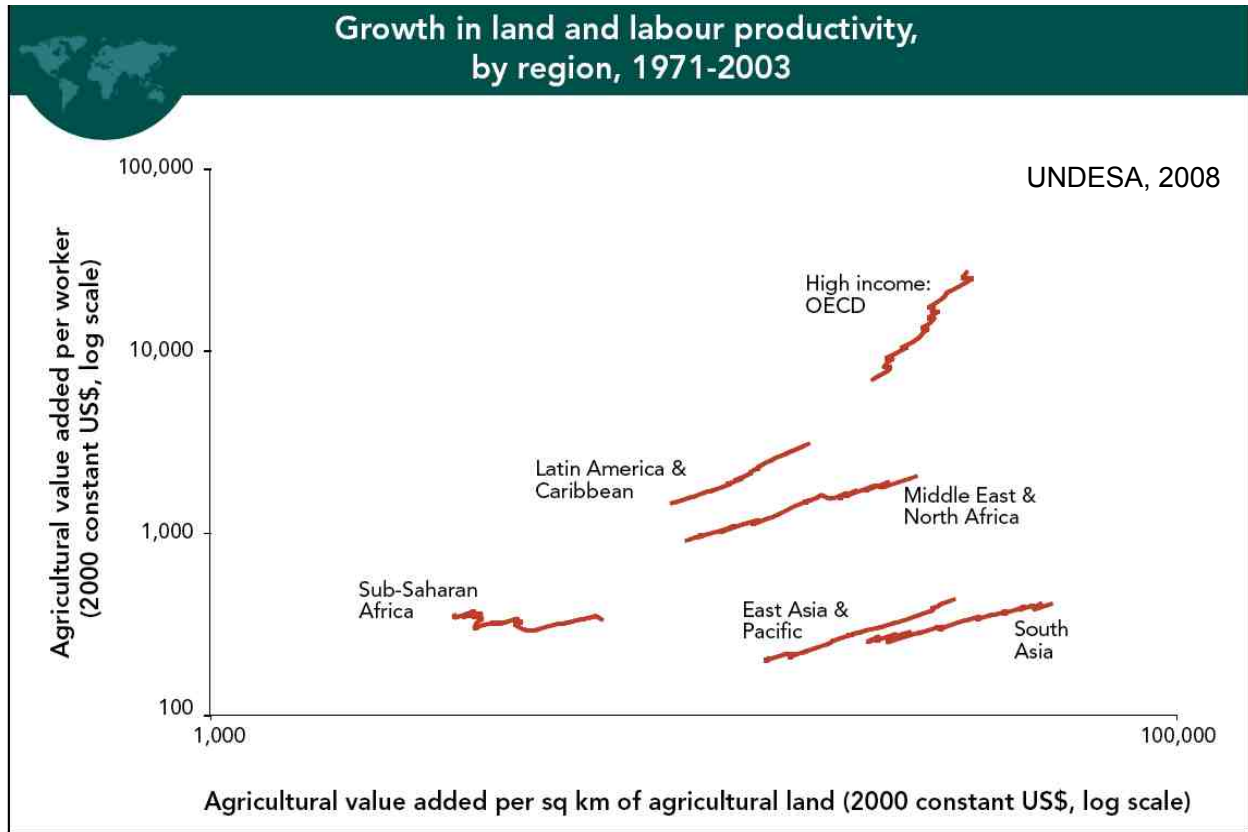
Claude Nicolier 1993





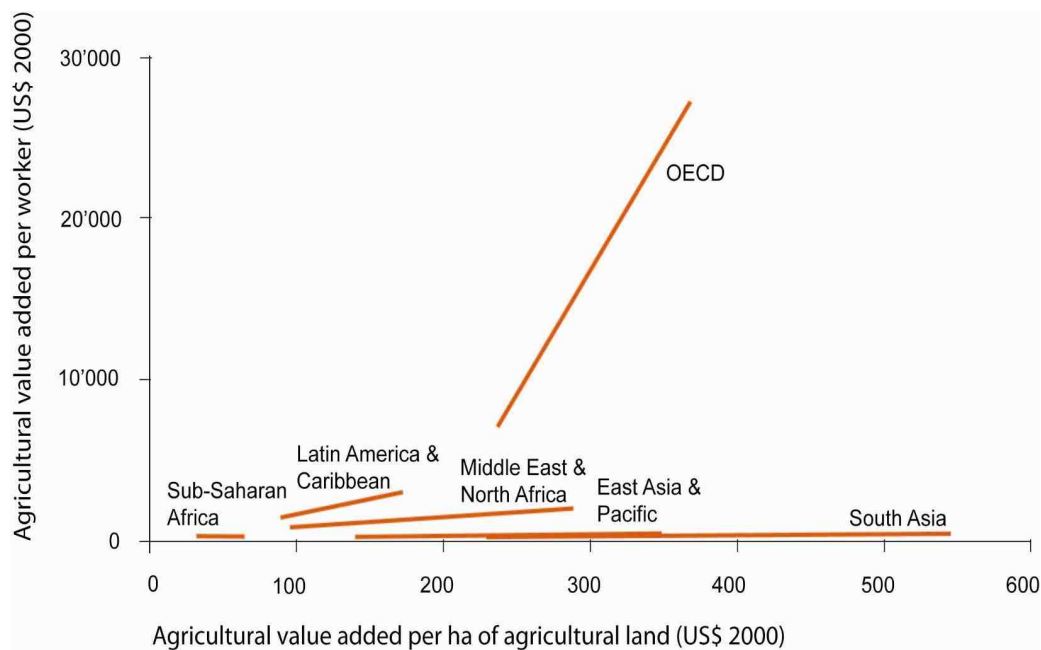


## Growth in land and labour productivity, by region, 1971-2003



Source: Based on data from the World Bank's World Development Indicators online database.

## Regionale Produktivität von Land und Arbeit, 1971-2003



Source: UNDESA, 2008 (modified)



